

PRODUCT INFO | NATURAL SMOKE AND  
DAY-TO-DAY VENTILATOR

## FIRELIGHT 3

### PURPOSE:

*Firelight 3 is a natural smoke and day to day ventilator which permits the entry of natural daylight. It has been tested in accordance with EN 12101-2.*

### APPLICATIONS:

*This smoke ventilator is suitable for use in commercial, industrial and municipal premises.*

### FEATURES AND BENEFITS:

- Available up to a maximum width x length of 3000 x 2500 mm in mm increments
- Tested according to window standards on air permeability, resistance to driving rain and resistance to wind load
- Its completely thermally broken design results in outstanding U-values
- Fall-through proof according to GS Bau 18
- Lids available with different infill panels
- EPDM and TPE seals with high weather resistance
- C<sub>v</sub> values up to 0.63

***Its technical details are described overleaf.***



## Description of the product

Firelight is a natural ventilator providing automatic smoke ventilation and day-to-day ventilation. Natural daylight can enter through its flap. It has been tested to EN 12101-2. It is manufactured completely from high quality components. Its principal component is corrosion-resistant aluminium. Multi-level, weather-resistant EPDM and TPE gaskets ensure ultra-low air permeability and U-values. Both frame and flap are made of thermally separated profiles. Its design makes it suitable for different types of infill panels, which are shown on the right hand side. It is available in many different sizes and flange types, which ensures that it is easy to install it into glazed roofs and façades as well as onto frames and various types of roofs.

## Variants

- Drives with bracket fixing onto the side opposite the hinge
- Electric drives installed on the side for larger opening angles
- Drives with channel fixing
- Electric chain drives

230 V rack and pinion drives are available for day-to-day ventilation. Depending on the installation position, the hinges can be installed at the bottom or top, left or right.

## Types of surface finishes

- Polyester powder coated in any RAL colour
- Unfinished aluminium profiles
- Anodised
- Special finishes possible

## Additional technical details

The Firelight 3 can be installed at any angle between 0° and 90° to the horizontal and is especially suitable for installation in glazing systems such as glass façades, glass roofs, etc. thanks to its transparent glazing panels. The special profile system reduces the risk of condensation to a minimum. Depending on the circumstances on site, it is possible to choose between different flange variants for the installation of the units. It is also possible to manufacture combinations with several different units, including those with fixed flaps.

## Features and benefits

- Available up to a maximum width x length of 3000 x 2500 mm in various dimensions (max. 5m<sup>2</sup>)
- Various types of flanges available between 24 and 46 mm in various dimensions
- Operating temperature: T(00) / T(-15)
- Wind load: up to WL 9000
- Snow load: up to SL 7000
- Resistance to heat: B 300-E
- Reliability: RE 1,000 + 10,000 for day to day ventilation
- Fall-through proof to GS Bau 18
- Among other things, Firelight has been tested to the following special window norms
  - EN 12207: Air permeability
  - EN 12208: Resistance to driving rain
  - EN 12211: Resistance to weather
- C<sub>v</sub> values up to 0.63
- Controlled drainage

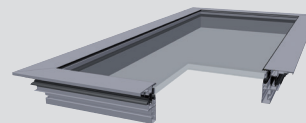
## There are various infill panels available:

Depending on the application and the requirements of the customer, the lid of the Firelight can be equipped with appropriate infill panels. All commercially-available infill panels can be used with a thickness of 10 to 50 mm. The total weight should not exceed 300 kg.

There are different infill panels to choose from:

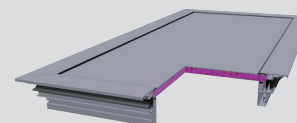
### Glass

Standard double-glazed insulating glass 32 mm thick or custom specific insulating glass. Triple insulating glass up to an overall thickness of 50 mm can be used.



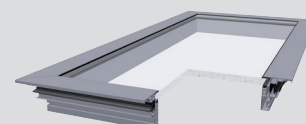
### Insulated aluminium panels

Outer skin 2 mm thick aluminium, **infill panel with a density of 30 kg/m<sup>3</sup>**, PUR thermal conductivity 0.030W/(mK), inner skin 2 mm thick aluminium. As standard 32 mm, **other thicknesses available on request.**



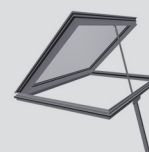
### Polycarbonate

Transparent or opaque polycarbonate, 16 mm thick, from 25 mm to 40 mm available on request

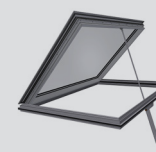


## Actuators

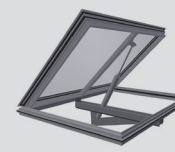
Electric spindle drive



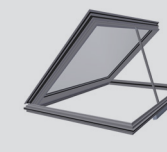
Pneumatic cylinder



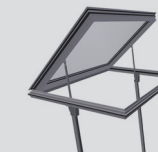
Pneumatic cylinder  
*Control channel*



Chain drive

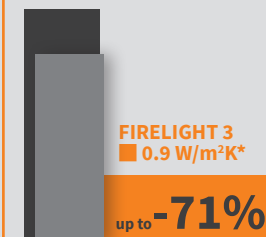


Electric drive  
*control Side control*



Specification according to EnEV (Energy saving regulations)

■ 3.1 W/m<sup>2</sup>K | ■ 2.5 W/m<sup>2</sup>K



Uw value

\*With the appropriate variant

All versions with pneumatic and 24 V drives are certified according to **EN 12101-2**

**Firelight has been tested to window standards**

*Depending on the type, sound insulation values of up to R'w = 42 dB are possible*

Firelight 3 has great variability **It can be ordered in mm increments**

**All variants can be marked to EN 14351**

