



PRODUCT INFO | NATURAL SMOKE AND DAY TO DAY

VENTILATOR

FIRELIGHT DUO

PURPOSE:

Firelight Duo is a natural smoke and day to day ventilator which permits the entry of natural daylight. It has been tested in accordance with EN 12101-2.

APPLICATIONS:

Firelight Duo is suitable for use in commercial, industrial and municipal buildings.

FEATURES AND BENEFITS:

- *Firelight Duo fulfills the requirements of the EnEV (energy saving regulation)*
- *Available up to a maximum width x length of 2500 x 3000 mm in mm increments*
- *High volume smoke ventilation*
- *Excellent U values and air permeability*
- *Thermally broken*
- *Tested according to window standards*
- *Excellent noise attenuation performance*
- *Many different infill panels available (glass, PC or aluminium with a thickness of 16-50 mm)*
- *A wide choice of colours*

See over for technical details



Description of the product

Firelight Duo is a natural ventilator providing automatic smoke ventilation and day-to-day ventilation. Natural daylight can enter through its flaps. It has been tested to EN 12101-2.

It is manufactured completely from high quality components.

Its principal component is corrosion-resistant and durable aluminium.

There are multi-level, weather-resistant EPDM and TPE seals installed right round.

These ensure ultra-low air permeability.

The Firelight Duo is 100% thermally broken, reducing the risk of condensation. Its flap is either from insulated aluminium, polycarbonate multi-wall sheets or insulated glass.

There are various thicknesses and designs of the infill panel available.

It is available in many different sizes and flange types, which ensures that it is easy to install onto most types of roofs.

In addition, the Firelight Duo is ideal for use into glazing systems.

Its high quality and low maintenance design makes it particularly energy-efficient.

The Firelight Duo is manufactured in an ISO 9001-certified factory and has a CE mark.

In addition, the Firelight Duo has been tested according to window and door standards and is classified as follows:

- EN 12207 – Air permeability: Class 4
- EN 12208 – Resistance to weather: Class A9
- EN 12211 – Wind loads: Class C5

Additional technical details

The Firelight Duo is very sturdy and is extremely energy efficient. High quality hinges ensure that it is reliable and that it retains its design shape.

Optional aluminium or glazed wind baffles ensure that it has an excellent aerodynamically effective area.

All variants of Firelight Duo are 100% thermally broken. The Firelight Duo can be opened and closed either by double-acting pneumatic cylinders that lock in their ends positions, or by 24 V DC or 230 V AC electric actuators.

A 230 V AC electric actuator offers the advantage over a 24 V DC electric actuator of a faster opening speed, as well as noticeably reduced wiring costs.

There are various means by which actuators are attached to the unit. Actuators can either be attached to the control channel or be fixed directly to the rain channel by means of brackets. As a result, in this instance there is more light entry, because no profiles are used in the lid and for fixing the drives.

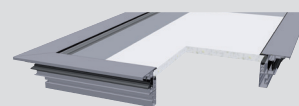
Features and benefits

- Available from 1000 x 1000 mm up to a maximum width x length of 2500 x 3000 mm in mm increments.
- A wide range of colours
- Can be used as an exhaust ventilator
- Release either thermally / automatically (68°C, 93°C, 141°C), via a wind/rain sensor and/or manually via a control box
- Ambient temperature: T (-15)
- Wind load: up to WL 9440
- Snow load: up to SL 6941
- Acoustic performance: up to 49 dB
- RE 1000 + 10,000 for day-to-day ventilation

Lid variants at a glance

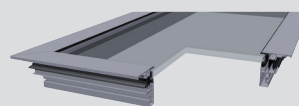
Depending on the application and the customer's requirements, the lids of a Firelight Duo can be equipped with appropriate infill panels. All commercially-available infill panels can be used with a thickness of from 16 to 50 mm. The total weight of the panel should not exceed 60 kg/m².

There are various infill panels available:



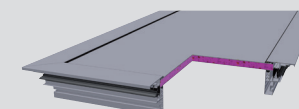
Polycarbonate

Transparent or opaque polycarbonate, 16mm or 25mm thick, or up to 50mm available on request



Glass

As standard double 32 mm thick insulating glass or customized insulating glass up to 50 mm thick. Triple insulating glass can be used without any problems.

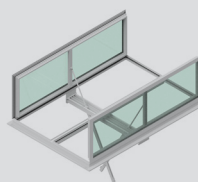


Aluminium insulated panels

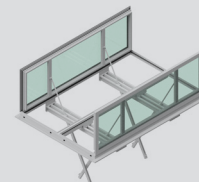
Outer skin 2 mm thick aluminium, polyurethane infill panel with a density of 30 kg/m³, thermal conductivity 0.030W/(mK), inner skin 2 mm thick aluminium. As standard 25 mm thick, available with other panel types available on request.

Controls

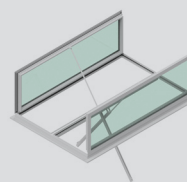
Control channel control
With 2 actuators



Control channel control
With 4 actuators



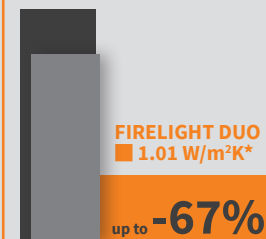
Bracket control



KEY FEATURES

Specified to EnEV (energy saving regulation)

■ 3.1 W/m²K | ■ 2.5 W/m²K



U value

* depending on the variant selected

Firelight Duo has been tested and is certified to
EN 12101-2

Fall-through resistant according to GS-BAU-18

Firelight Duo has been tested to the highest performance levels of the window and door standards

Optional insect and bird screens as well as SiteGuard available

Variable infill panels

Firelight Duo is available in mm increments

Low profile design only 120 mm high when closed

